



# Cold Case America™

A Research Initiative of Blue Wall Institute, L.L.C.

## **Operational Code Information System (OC-IS™): A Behavioral and Ideological Framework for Cold Case Investigation**

Dr. Olivia Johnson & Dr. Jorey Krawczyn

### **ABSTRACT**

Cold Case America™ introduces the Operational Code Information System (OC-IS™), a structured behavioral informational framework designed to transform cold case investigations through the systematic analysis of offender behavior, access pathways, control dynamics, and operational belief systems preceding violent action. Unlike traditional investigative frameworks that prioritize motive-based reasoning, OC-IS™ focuses on behavioral capability, opportunity structures, psychological readiness, and ideological permission structures as the primary drivers of violent conduct.

At the center of this model is the concept of the Operational Code as an internalized ideology and belief system that governs perception, justification, behavioral permissibility, and the interpretation of violence. In this framework, violent conduct is understood not merely as impulsive or reactive behavior, but rather as the result of intersecting cognitive, emotional, environmental, and ideological factors.

Rather than asking why a crime occurred, OC-IS™ asks whether it was behaviorally possible, structurally supported, and operationally permitted through the offender's internal belief system. This shift allows investigators to reconstruct offender behavior through observable patterns, behavioral structures, and ideological coding rather than speculative intent.

The system functions as an enhanced investigative model, converting fragmented case information into structured informational outputs, including offender behavioral profiles, case linkage analysis, operational code classification, and prioritized investigative recommendations.

## **INTRODUCTION**

Cold cases represent one of the most enduring challenges in modern law enforcement. Over time, physical evidence deteriorates, witness availability declines, and investigative momentum weakens. In many cases, progress stalls not because information is absent, but because traditional frameworks are unable to move beyond motive-driven interpretations, current behavioral profiles, and established personality disorders.

Cold Case America™ was developed to address this gap. The Operational Code Information System™ (OC-IS™) reintroduces structure into stalled investigations by focusing on behavioral continuity and operational belief systems rather than narrative explanation. It recognizes that violent acts are not random occurrences; they are the outcome of identifiable psychological processes, environmental access, behavioral reinforcement patterns, and internalized ideological structures that shape behavioral permission and operational readiness.

Within this framework, the Operational Code is conceptualized not merely as a behavioral construct, but as an ideology and belief system architecture through which offenders interpret relationships, power, morality, control, grievance, sexuality, entitlement, and violence. The operational code becomes the internal system through which individuals determine what actions are justified, acceptable, or necessary under perceived circumstances and correlated to their Code.

By systematically analyzing these dimensions, the OC-IS™ allows investigators to revisit cold cases through a structured behavioral and ideological lens, generating new insights and leads even decades after initial investigative efforts. Additionally, once cases are entered into the OC-IS™, they require review every three years by the Collaborative Case Review Consortium, ensuring opportunities to apply emerging technologies, forensic advancements, and enhanced analytical methodologies.

## **THEORETICAL FOUNDATION: THE OPERATIONAL CODE OF SEX AND VIOLENCE™ (OC-SV)**

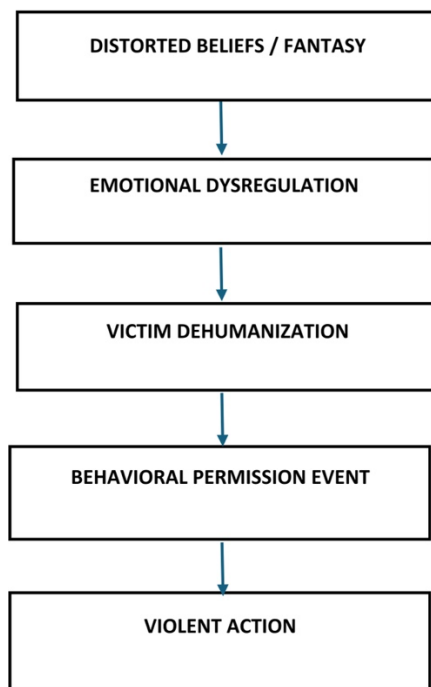
At the core of OC-IS™ is the Operational Code of Sex and Violence™ (OC-SV), a behavioral and ideological framework that conceptualizes violence as the product of a structured cognitive, emotional, and belief-driven progression rather than an isolated or impulsive act. Planning and attack implementation are rehearsed and refined with fantasy thoughts and code adherence.

Within this framework, the operational code functions as an internalized ideology and belief system that governs how individuals interpret reality, assign value to others, justify behavior, and determine behavioral permissibility. Violent behavior emerges when distorted beliefs, emotional dysregulation, environmental opportunity, and behavioral reinforcement pathways converge into what is defined as a behavioral permission event.

A behavioral permission event represents the threshold at which an individual's internal operational code authorizes external violent action (see Diagram 1). In this sense, the operational code acts as the ideological engine that transforms fantasy, grievance, entitlement, dehumanization, or distorted morality into action and observable behaviors.

This concept represents a fundamental shift away from motive-based reasoning. Motive explains intent; the operational code explains the underlying ideological structure that permits, justifies, and sustains violent behavior.

**Diagram 1: Ideological-Behavioral Progression Model (Operational Code Core Engine)**



This progression demonstrates that violence is not a singular decision point but the endpoint of an evolving ideological, cognitive, and behavioral sequence that can be reconstructed through investigative analysis.

## **STRUCTURED CLASSIFICATION OF VIOLENT BEHAVIOR**

Within the OC-IS™, violent behavior is organized into a structured interpretive classification system designed to support behavioral consistency across investigations. The purpose of this system is not to strictly categorize offenders, but rather to provide a framework for understanding dominant operational ideologies and primary behaviors and motivations.

Violence may stem from dynamics related to power and control, in which individuals pursue dominance, authority, or influence within relationships. It may also originate from motivations associated with retribution, whereby perceived injustices or grievances become justification frameworks for violent behavior. Emotional dysregulation represents another pathway characterized by impulsive escalation and diminished behavioral control during periods of conflict or stress.

Other classifications include violence linked to severe mental illness, where distorted perception alters reality testing and threat interpretation. Some cases are driven by financial or material gain, where violence becomes instrumental in achieving economic objectives. Sexual motivation may serve as a behavioral driver in cases involving coercion, fantasy reinforcement, deviant arousal patterns, or entitlement-based operational ideologies.

Ideological and political violence emerges when belief systems become radicalized into operational justification frameworks for harm. Cultural or honor-based violence reflects socially embedded expectations regarding identity, status, or familial obligation. Negligent or accidental killings occur through recklessness or systemic failure rather than direct intent. Crimes of passion reflect intense emotional escalation within interpersonal relationships that results in the temporary collapse of behavioral regulation.

Each classification reflects an underlying operational belief structure that shapes how offenders interpret behavior, morality, entitlement, justification, and violence. This structured classification enables investigators to interpret violence through behavioral and ideological logic rather than assumptions.

## **BEHAVIORAL INFORMATIONAL FRAMEWORK**

The OC-IS™ evaluates each case through four foundational dimensions: access, control, behavioral translation, and belief system coding (see Diagram 2).

### **Access Pathways**

Access pathways describe how an offender gains proximity to a victim. This may occur through established relationships, authority structures, manipulation, grooming behaviors, or

opportunistic encounters. Understanding access often provides greater investigative value than motive because it narrows the universe of potential offenders.

### **Control Mechanisms**

Control mechanisms describe how compliance is achieved during the offense. This may involve physical coercion, psychological or physical dominance, authority exploitation, intimidation, or emotional manipulation. Control analysis provides insight into offender behavioral style, confidence, planning capacity, and relational dynamics.

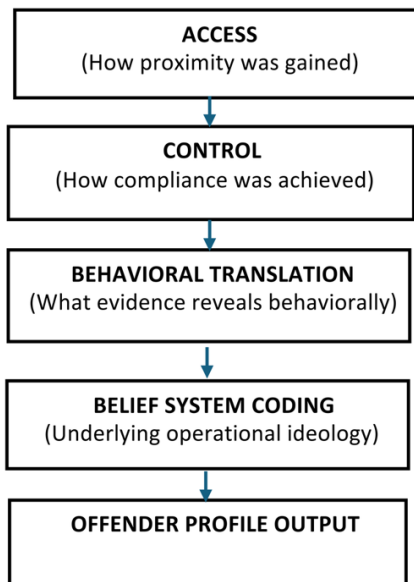
### **Behavioral Translation**

Behavioral translation refers to the interpretation of physical evidence as expressions of behavior. Crime scene indicators are not isolated facts; they are behavioral outputs. The absence of forced entry may indicate familiarity, staging may indicate cognitive awareness of investigative processes, and overkill may suggest emotional escalation or relational significance.

### **Belief System Coding**

Belief system coding identifies the ideological and operational frameworks that govern offender justification systems, distorted morality, entitlement structures, grievance narratives, and behavioral permission thresholds.

**Diagram 2: Behavioral Informational Framework**



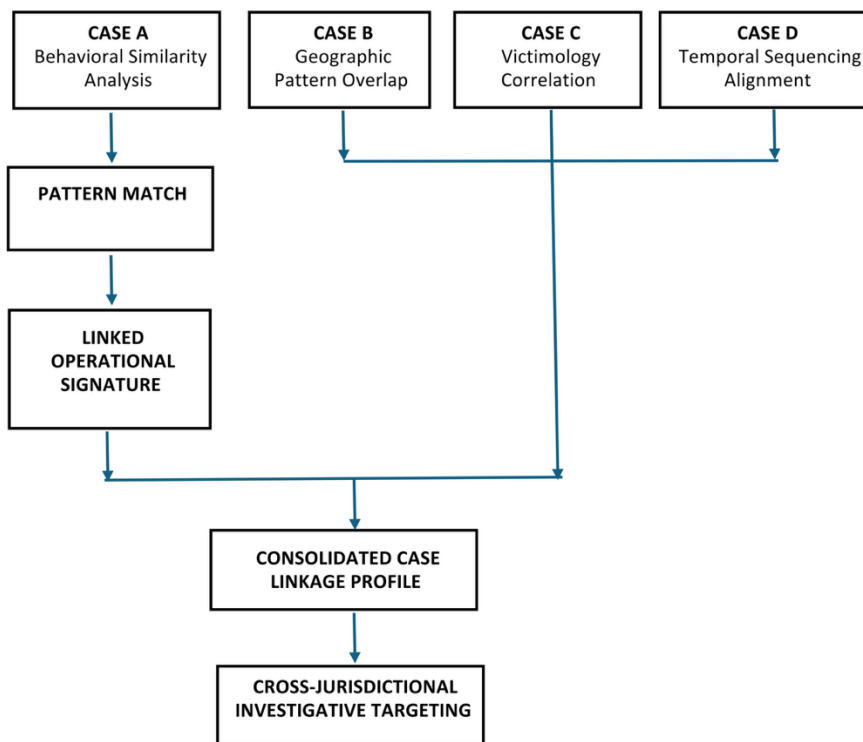
This framework ensures investigative interpretation remains structured, behaviorally grounded, and ideologically informed.

### CASE LINKAGE INFORMATIONAL ENGINE

One of the most significant contributions of OC-ISTM is its ability to identify behavioral and ideological connections across multiple cases. Traditional investigations often operate in isolation, limiting the ability to detect broader patterns of offender behavior and operational belief systems.

The OC-ISTM evaluates similarities in modus operandi, geographic clustering, victimology overlap, temporal sequencing, behavioral code alignment, and operational ideology patterns. Through this process, it can identify serial patterns and cross-jurisdictional relationships that might otherwise remain undetected.

Diagram 3: Case Linkage Informational Model



This capability allows investigations to transition from isolated case review to network-based behavioral and ideological analysis.

## **OPERATIONAL BEHAVIOR BLUEPRINT™**

Each case processed through the OC-IS™ produces an Operational Behavior Blueprint™ (OBB), a structured behavioral and ideological profile synthesizing investigative findings into actionable informational outputs.

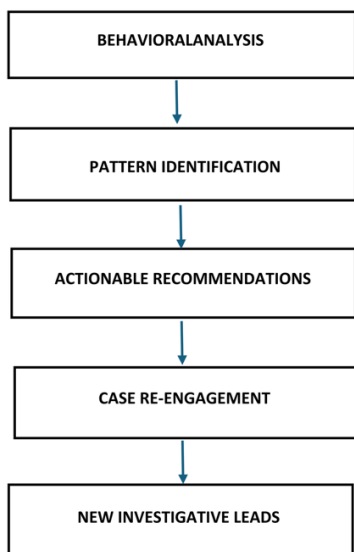
This blueprint includes access classification, control methodology, relational proximity estimation, behavioral stability assessment, escalation trajectory, and dominant operational code classification. Unlike traditional profiling methods that rely heavily on narrative speculation, the OBB is grounded in structured behavioral reconstruction and operational belief system analysis, enabling investigators to prioritize suspects and refine investigative strategy with greater precision.

## **INVESTIGATIVE ACTION INFORMATIONAL SYSTEM**

OC-IS™ extends beyond analysis by translating behavioral findings into a structured operational framework supported by proprietary protocols. This approach provides a new analytical vantage point for identifying leads, uncovering behavioral patterns, and generating alternative investigative pathways.

The system informs prioritization of re-interviews, reassessment of geographic relevance, reexamination of physical evidence through behavioral context, and reactivation of overlooked witnesses, informational sources, or investigative opportunities.

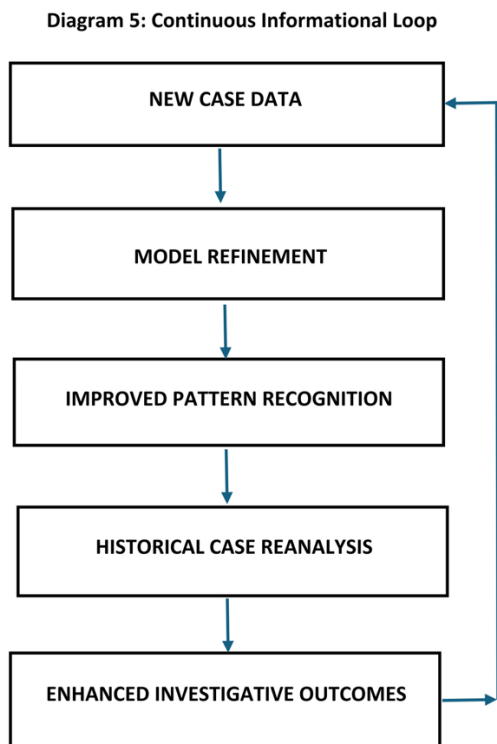
Diagram 4: Fatal 10™ Integrated Predictive Pipeline



This ensures that informational findings directly support operational progress.

## **CONTINUOUS INFORMATIONAL LEARNING LOOP**

The OC-ISTM™ is designed as an adaptive and evolving system. As new data is introduced, behavioral models are refined, operational code classifications improve, and previously unresolved cases may be reanalyzed with enhanced analytical accuracy.



This continuous feedback loop supports long-term system evolution and investigative advancement.

## **REFRAMING VIOLENCE and VIOLENT BEHAVIOR**

The introduction of OC-ISTM™ represents a structural shift in investigative methodology. By moving beyond motive-centered reasoning and toward behavioral and ideological capability modeling, the system addresses one of the most persistent limitations in cold case investigation: analytical stagnation.

This framework reduces cognitive bias, enhances cross-jurisdictional collaboration, and aligns investigative practice with structured behavioral science and operational ideology analysis. It provides a scalable method for interpreting violence not as an unpredictable event, but as the observable outcome of identifiable behavioral and belief-driven systems.

Most importantly, OC-IS™ reframes violence as the behavioral expression of an operational ideology. In this model, behavior cannot be fully understood apart from the internal belief systems that authorize, justify, and sustain violent conduct.

## **ETHICAL AND OPERATIONAL DISCLAIMER**

Cold Case America™ and the OC-IS™ operate solely as analytical support systems. They do not determine culpability, perform enforcement functions, or replace the authority of law enforcement or prosecutors, nor are they intended to serve as admissible legal evidence.

All outputs are intended solely to provide structured behavioral and ideological analysis designed to support the interpretation of behavioral patterns and operational code dynamics. The OC-IS™ functions exclusively as an analytical informational framework and does not participate in, direct, or replace investigative procedures, legal determinations, evidentiary standards, or professional decision-making conducted by authorized agencies or personnel.

## **CONCLUSION**

Cold Case America™ and the Operational Code Information System (OC-IS™) introduce a transformative approach to analyzing and reviewing complex unresolved cases. This methodology shifts investigative practices from fragmented narrative-driven interpretation toward structured behavioral and ideological informational analysis, identifying violent acts as reconstructable patterns rather than isolated or exclusively motive-based events.

By integrating the OC-IS™ with the Operational Code of Sex & Violence™ (OC-SV), this model establishes a unified system linking structured data architecture with behavioral and ideological interpretation. OC-IS™ provides the standardized framework for organizing, coding, and analyzing multi-source case information, while OC-SV translates those structured inputs into operational meaning, escalation pathways, belief systems, and behavioral permission structures. Together, they create a continuous analytical ecosystem supporting historical case reconstruction, operational pattern recognition, and behavioral linkage analysis across time, geography, and offender typologies.

This paradigm shift moves beyond static case review toward dynamic behavioral and ideological reconstruction. Consequently, OC-IS™ enhances the ability to identify actionable patterns, refine investigative strategies, reduce analytical subjectivity, and uncover previously unrecognized investigative opportunities.

Importantly, this framework does not replace investigative authority or professional judgment. Rather, it provides a structured behavioral and ideological informational support system designed to enhance analytical clarity, consistency, and operational insight.

Ultimately, Cold Case America™ advances a new investigative paradigm—one that recognizes violent behavior as the outward expression of an underlying operational ideology and belief system that can be reconstructed, analyzed, and interpreted within a structured investigative framework.

## Author Biographies

### Dr. Olivia Johnson

Dr. Olivia Johnson is a suicidology researcher, United States Air Force veteran, and former law enforcement officer whose work bridges investigative practice, behavioral science, and organizational systems analysis. For nearly two decades, she has led national efforts in first responder wellness, suicide prevention, and occupational risk mitigation, training thousands of military, law enforcement, and frontline professionals.

She is a certified Law Enforcement Psychological Autopsy Investigator and a nationally certified Medicolegal Death Investigator. Her applied research has focused on identifying systemic gaps in early risk detection, investigative coordination, and post-incident analysis—particularly within law enforcement suicide, violent death, and high-risk occupational populations.

Dr. Johnson is the Founder of Cold Case America™, a research initiative of Blue Wall Institute, L.L.C., dedicated to advancing structured investigative review, behavioral reconstruction, and multidisciplinary cold case analysis. This initiative integrates case-based research, victimology frameworks, and operational coding systems to improve clarity in complex and historically unresolved investigations, including cold case homicides and unidentified human remains.

Her research includes the development of a national dataset on law enforcement suicide, analyzing approximately 3,500 cases using more than 200 variables and psychological autopsy methodology to identify behavioral and environmental risk patterns. This work informed the development of the FATAL 10™ framework, a structured model for identifying converging risk contributors in occupational and behavioral fatalities.

Together with Dr. Jorey Krawczyn, she created the Operational Code of Sex & Violence™ paradigm, which analyzes how offenders' ideologies and beliefs shape their behavior from thought to action. This framework focuses on the internal "code" guiding decision-making, especially how belief systems influence patterns of sexual and violent conduct. It also aims to predict behavioral trends and assist in solving cold cases and reviewing old investigative files using structured ideological analysis.

Dr. Johnson holds a Doctorate in Management and Organizational Leadership, a master's degree in criminology and criminal justice, and a Bachelor's in Workforce Education and Development. Her work continues to focus on advancing investigative rigor, improving case resolution frameworks, and integrating behavioral science into cold case analysis and operational decision-making.

## **Dr. Jorey Krawczyn**

Dr. Jorey L. Krawczyn has an extensive career extending over 55 years in law enforcement, forensic psychology, and teaching. His law enforcement experience ranges from undercover narcotics investigations to the administrative duties of Chief of Police (Retired). He was in private practice for twelve years with psychiatrist A. Mohmed, MD, where he authored over 400 court-ordered comprehensive forensic evaluations.

Dr. Krawczyn served three years as a Senior Police Psychologist for the US Department of Justice: International Criminal Investigative Training Assistance Program (ICITAP) assigned to Kyrgyzstan, Kosovo, and Tanzania. He served an additional three years as the Academic Director for the US Department of State's International Law Enforcement Academy and two years with the Bureau of International Narcotics and Law Enforcement Affairs as a Psychological Advisor to foreign judges, prosecutors, and senior law enforcement officials on matters of Transnational Organized Criminals and Radicalized Violent Extremists.

Dr. Krawczyn was contracted as a Subject Matter Expert, Instructional Designer, and lecturer for the Naval Chaplaincy 27<sup>th</sup> Professional Development and Training Course (PDTC) "The Role of Chaplaincy in the Aftermath of Targeted Violence. He also functioned as an advisor to four Commanders, five Admirals, and three Vice-Admirals on effective resolutions and behavioral insights regarding Chaplain's confidentiality and the mass shootings at the DC Naval Yard and Chattanooga Recruitment Center.

Dr. Krawczyn is a faculty member in the Department of Criminal Justice Graduate Studies at Saint Leo University, where he teaches Forensic Interviews, Methodologies of Violence, and Quantitative Research Methods. He also Chairs Dissertation Committees and doctoral research. He has been a psychological consultant and contributor to Nancy Grace's Crime-Line broadcasts, having appeared on over 65 episodes. Dr. Krawczyn provides analytical research and analysis to the Blue Wall Institute's National Law Enforcement Suicide Mortality Database and has developed the research-based alteration in treatment practice from the Disease Model (Pathogenic) to the Health Model (Salutogenic) to the Suicide Inoculation Protocols.

He has testified as an Expert Witness in twenty-two State and Federal Court cases on police behaviors, police testing methodologies, and violent offenders. He holds a Bachelor's in Criminal Justice Administration, a Master's in Human Development, a second Master's in Instructional Design, and a Doctorate in Counseling Psychology. Dr. Krawczyn also maintains his Florida State Law Enforcement Officer and Police Instructor certifications.

PAGE LEFT BLANK INTENTIONALLY